

LIBERCOURT

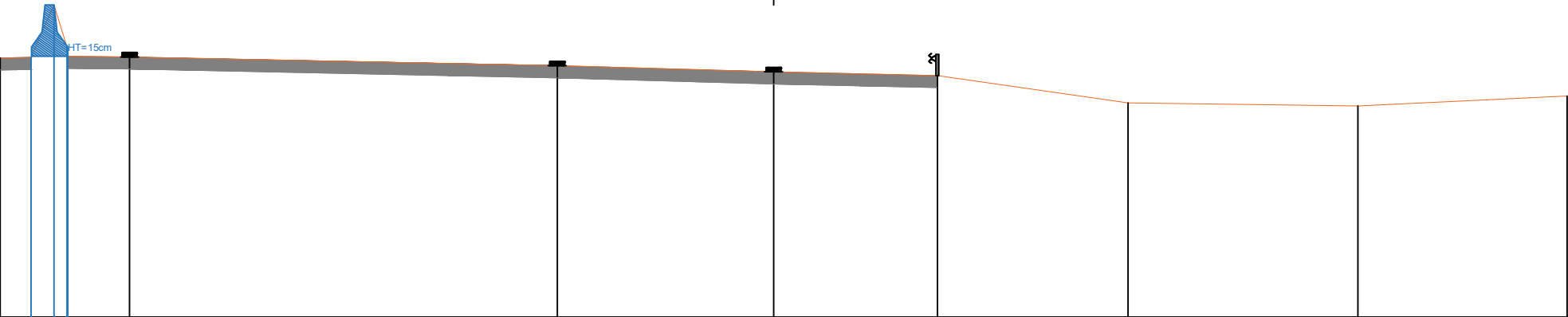
Autoroute A1

Sens Paris -> Lille

Profil P279

indice: 1

Sens Paris -> Lille



Echelle des longueurs : 1/100  
Echelle des altitudes : 1/100

PC : 19.00 m

Altitudes TN	23.30	23.31	24.18	23.33	23.32	23.17	23.07	23.01	22.55	22.50	22.57
Distances à l'axe TN	-12.834	-12.324	-11.941	-11.716	-10.689	-3.590	-0.000	2.718	5.882	9.696	13.168
Distances partielles TN	0.510	0.383	0.225	1.027	7.099	3.590	2.718	3.165	3.814	3.473	